



## AMRUTVAHINI COLLEGE OF PHARMACY, SANGAMNER

P.O. Sangamner (S.K.) Tal. Sangamner - 422 608, Dist. Ahmednagar.

Phone : (02425) 259335 • Fax : (02425) 259349

Email : principal@amrutpharm.co.in • www.amrutpharm.co.in

### CONSULTANCY AND TESTING SERVICES

Amrutvahini College of Pharmacy is an ISO 9001:2015 certified college, permanently affiliated to Savitribai Phule Pune University, Pune. Approved by AICTE, PCI, New Delhi. & D.T.E. Government of Maharashtra, Mumbai. Established in 2004, the college with its vision to impart quality education and foster advance and innovative research, we are introducing consultancy and testing services for research scholars engaged in basic or applied research projects.

### DEPARTMENT OF PHARMACEUTICAL ANALYSIS

The process of method development is research focused on the discovery of a suitable set of conditions for the analysis of samples. Our Lab is equipped with sophisticated instruments which makes us uniquely qualified to aid in method development. We have the analytical tools and skills as well as our own complete line of liquid chromatographic and Spectroscopic techniques.

### FACILITIES AVAILABLE

#### High Performance Liquid Chromatography

- ▶ Development and Validation of HPLC Methods
- ▶ Stability-Indicating method development.
- ▶ Bioanalytical methods development and its pharmacokinetic study.

#### UV-VIS Spectrophotometer

- ▶ Qualitative as well as quantitative analysis. Beer's plot, kinetic studies etc

#### FT-IR SPECTROSCOPY

- ▶ One of the most important applications of the FT-IR is quality control like polymer, chemistry, Pharma, automotive, electronics and packaging. The predominant question in quality control is to verify that the sample meets its specifications. The analysis is performed automatically by comparison of the measurement result against reference data.
- ▶ Spectral Interpretation of Solid and Liquid Sample Analysis

#### COOLING CENTRIFUGE

- ▶ These newly developed compact bench top Cooling Centrifuges models CM-8 Plus offers quiet operation with very small footprint.
- ▶ Centrifuge model CM-8 Plus is suitable for routine sample analysis in Medical, Hospital, Pathology and Institutional laboratories.



**HPLC (Agilent 1260 Infinity II)  
Quaternary Pump VL**



**FT-IR BRUKER**



**UV-VISIBLE SPECTROSCOPY  
(Shimadzu 1800)**



**COOLING CENTRIFUGE**

# DEPARTMENT OF PHARMACOLOGY

A CPCSEA Govt. of India approved separate and spacious Animal house facility having capacity to house experimental animals like, Mice, Rats, Guinea Pigs and Rabbits. A well equipped Pharmacology Laboratory with expertise staff to perform various preclinical Pharmacological experiments

## FACILITIES AVAILABLE

### Preclinical Pharmacological Screening of following category of drugs

- ▷ Analgesics
- ▷ Anti-inflammatory
- ▷ Anti-arthritis
- ▷ Anti-asthmatic
- ▷ Neurobehavioural studies
- ▷ Nootropics (Memory Enhancing)
- ▷ Anti-Parkinson's
- ▷ Antipsychotics
- ▷ Antiepileptics
- ▷ Antidiabetics
- ▷ Hepatoprotectives
- ▷ Wound healing drugs
- ▷ Antimicrobial activity

### Other studies routinely conducted

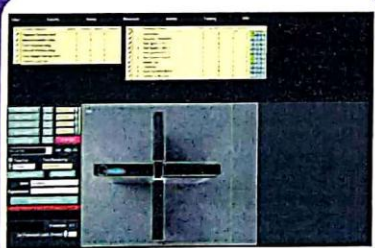
- ▷ Neurotoxicity
- ▷ Acute Oral Toxicity testing as per OECD guidelines
- ▷ Biological assays using isolated tissues
- ▷ Bio-analytical studies



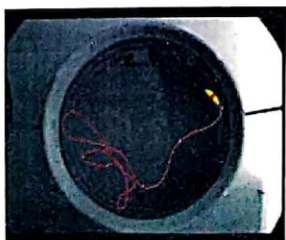
Eddy's hot plate Analgesiometer



Digital Plethysmometer



Video Tracking software system



Morris Water maze



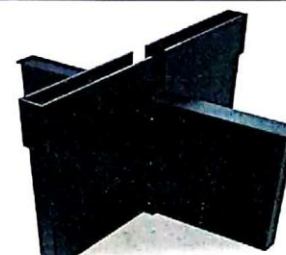
Rotarod Apparatus



Assembly for study on Isolated Tissues



Tulip Coralab 3000 Bio-analyser



Elevated Plus Maze

Contact Person : **Mr. H.E. Velis**, Mo.: +919763461229  
**Mr. R.P. Thorat**, Mo.: +919970857565

Email : [hrushikeshvelis@gmail.com](mailto:hrushikeshvelis@gmail.com)  
Email : [thoratrahul123@rediffmail.com](mailto:thoratrahul123@rediffmail.com)